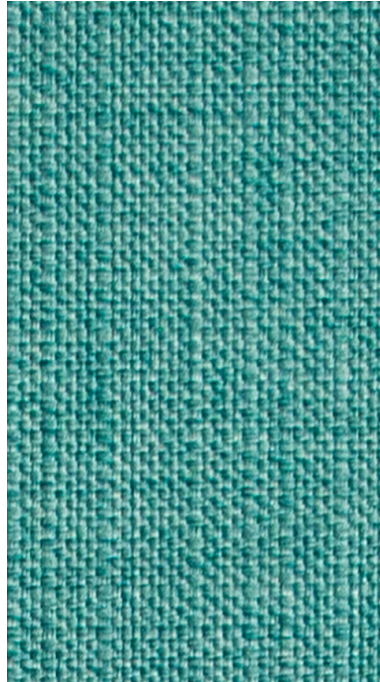
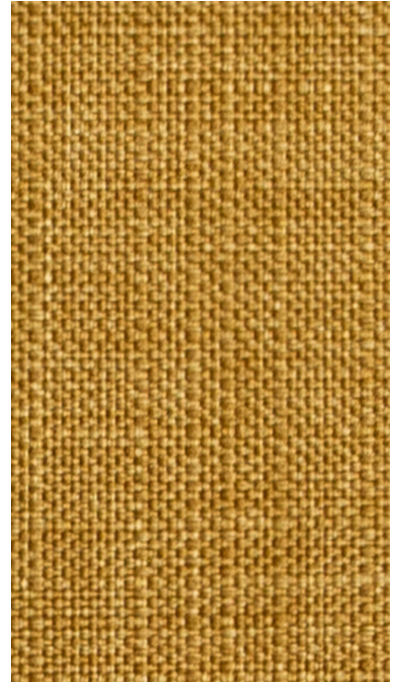


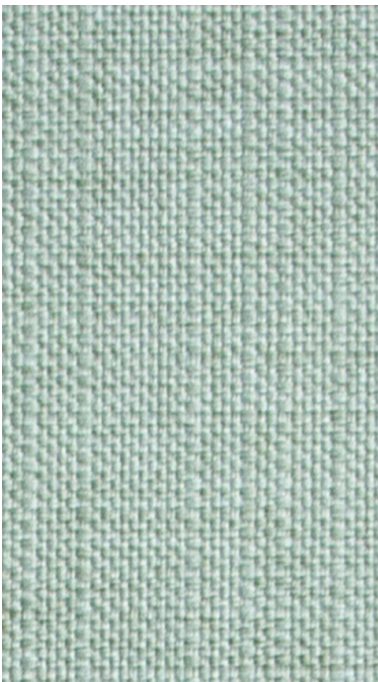
Forum Alabaster



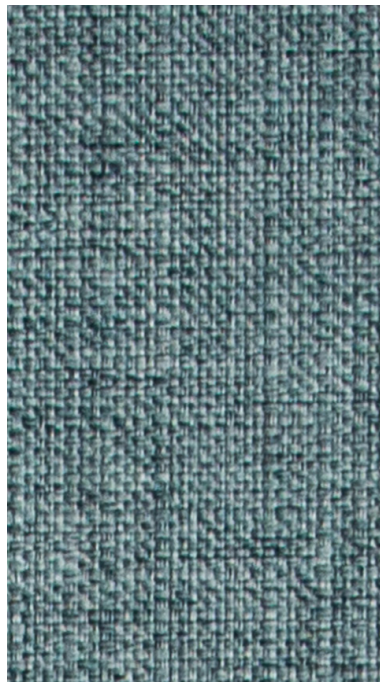
Forum Fountain



Forum Hero



Forum Cement



Forum Granite



Forum Stone

Forum

Width	180cm
Composition	100% Polyester
Roll size	50m approx.
Weight	621g per lineal metre
Use	Screen / Upholstery
Abrasion	105,000 Martindale
Flammability	AS3837, ISO5660, AS1530.3
Finish	Mill applied Soil & Stain treatment
Environmental	Oeko-Tex Certified

Colour Variations:	All textiles are subject to some colour variation. Fabric supplied to customer order will be within commercial tolerance.
CTA Performance Rating:	Tests conducted by independent testing laboratories indicate that FORUM met or exceeded the performance guidelines for Screen Fabric use and Heavy Duty Commercial Use as determined by the CTA (Commercial Textile Association of Australia and New Zealand).
Fabric Care:	Do not remove any part for separate cleaning. Protect from direct sunlight. Vacuum regularly using low suction. Rotate reversible cushions regularly. Professionally dryclean or wipe clean with a damp cloth.

AUSTRALIA
telephone: 1800 173 209
web: atworkwithcamira.com
email: sales@atworkwithcamira.com
*at work is a brand of Textilia

NEW ZEALAND
telephone: +64 9 302 3182
web: textilia.co.nz
email: info@textilia.co.nz



Commercial Textile Association
of Australia & New Zealand Limited.



Commercial Textile Association
Performance Rating.



Commercial Textile Association
Performance Rating.