



Office Chair



Eclipse Aragon Visitor - Medi Vinyl



Anti Bacterial Tested vinyl: ISO22196



• Optional Steel
Pin Reinforced Arms



• High Quality
Foot Glides



• Quality finish no
protruding underseat bars





Eclipse Aragon Visitor - Medi Vinyl



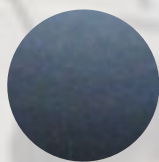
FEATURES

Eclipse Aragon Visitor Chairs:

- Sturdy fully welded frame
- Arms optional
- Stackable
- 2.0 mm thick steel frames
- Available with plastic shell back
- Available with breathable mesh back
- Wide seat & back for extra support
- Approved to Australian standards
- These chairs have been tested for Strength, durability and stability to the below standard, by SGS testing facilities, the largest testing agency in the World.
- Test Conducted: AS/NZS 4688:2.2000 Fixed Height Chair



COLOURS



Medical Vinyl



SPECIFICATIONS

Product	Seat height	Seat width	Seat depth
Eclipse Aragon Visitor Chair	480	480	500
Eclipse Aragon Visitor Mesh Chair	480	480	500
Optional Arms	665 <small>Arm Height (floor to top)</small>	40 <small>Arm Width</small>	425 <small>Arm Depth</small>

*all sizes in mm & subject to change without notice


Flexible seating for reception use or in the conference, meeting or training room the Aragon visitor is at home in so many different environments that you will wonder how you ever did without it. Now in the new breathable mesh series. Sure to enhance any office or commercial situation.



WARRANTY

- 3 Years
- Covers Material & Workmanship
- Does not cover misuse or abuse



 is a wholly owned trademark of the Global group of companies



This brochure is printed 100% carbon neutral. We have reduced our carbon footprint by partnering with Worldwide Online Printing, Western Australia's only NO CARBON printing company.



Scan to download electronic version